

**RUSSIAN SKI-O CUP (WRE)  
RUSSIAN NATIONAL SKI-O COMPETITION**

**BULLETIN 1**

18-22 December 2007, Beloretsk (Bashkortostan Republic)

**Event director:** Vladimir Kapitonov

e-mail: [dushor@mail.ru](mailto:dushor@mail.ru)

tel: +7(347) 2748910

+7(927) 938-0465

+7(901) 441-6307

**Event adviser:** Alexander Bliznevsky (RUS)

**Competition center:** sport and recreational center “Metallurg”



1. Competition center “Metallurg” and competition area
2. Training camp 1-17.12.2007
3. Alpine-Ski center
4. Beloretsk town center, alternative accommodation

**Programme:**

19 Dec	One-Man-Relay (WRE)
20 Dec	Sprint
21 Dec	Middle (WRE)

**Classes:**

H14	H17	H20	HE
D14	D17	D20	DE

**Punching system:** SportIdent

Badge rent 3 euro

**Terrain**

Hilly terrain (South part of Ural Mountains).  
Height difference 240 m. Altitude 555-795 m a.s.l.  
Cross-country skiing and Alpine skiing area.

**Entry:** [dushor@mail.ru](mailto:dushor@mail.ru)

Entry fee 25 euro (for all days)

Deadline 10 Dec 2007

**Accommodation and food:**

Hotel «Metallurg» in competition center or

Hotel – 500 m from comp. center

from 20 euro (meal included)

Reservation by e-mail: [dushor@mail.ru](mailto:dushor@mail.ru)

**Training camp:**

Ski-O training camp possibility from 1 Dec to 17 Dec 2007 with Russian National Junior Ski-O team.

Entry: [dushor@mail.ru](mailto:dushor@mail.ru)

**Travel:**

Beloretsk town located about 1500 km east from Moscow.

By train Moscow - Magnitogorsk (Beloretsk station).

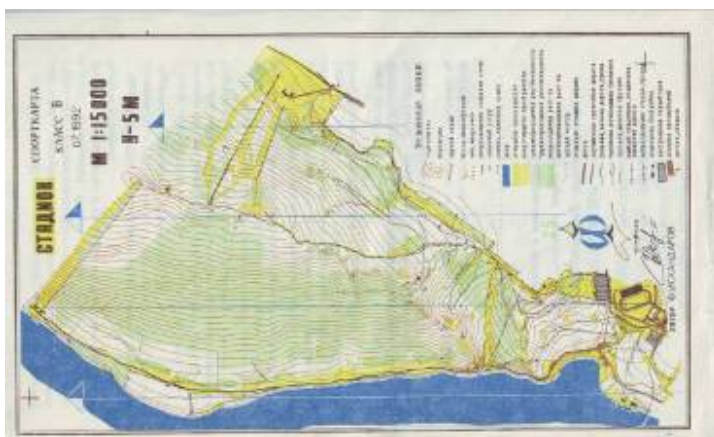
By plane to Ufa, then by bus or local train (260 km)

By plane to Magnitogorsk, then by bus or local train (40 km)

By bus from Ufa, Miass, Ekaterinburg or Chelyabinsk.

**Information:** [www.moscompass.ru](http://www.moscompass.ru)

Details in Bulletin 2.

**Previous map sample:**

# Training camp map sample:

